

# ALUMINIUM- WELDING -BRAZING-OVERLAYING

**Aluminum is a unique and widely used non ferrous metal.**

It is light weight, strong ,has a good corrosion resistance and a good conductor of heat and electricity .

Aluminum is used extensively in the following industries.

- Transportation: Automobile, aircraft, trucks, railways, cars, marine vessels, bicycles etc.
- Construction of windows, doors, street lighting post, masts
- Air-condition, refrigeration
- Electrical transmission lines ,bus bars etc.

Aluminum can be joined by welding processes such as

- TIG (GTAW) MIG (GMAW) or MMA and by Brazing or soldering
- The choice of process will depend on size of part, availability of equipment and strength of joint required.

## FILLER METALS. WELDING-BRAZING

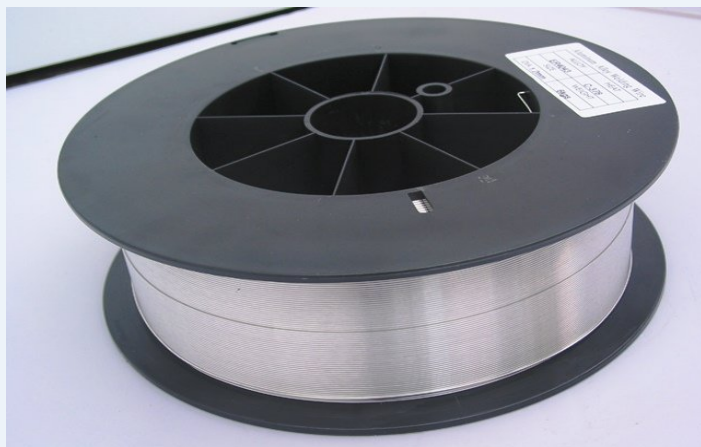
We supply aluminum alloy filler metals in different alloys and sizes ,in rod or spool form .

## FILLER METALS FOR BRAZING.

**We offer a wide range of aluminum filler rods and fluxes for general flame induction or furnace brazing application**



ALUMINIUM TIG-GTAW- BRAZING RODS 612 T



ALUMINIUM GMAW/MIG WIRE



GMAW (MIG) WELDING 615 M



GTAW (TIG) WELDING.



BRAZING ALUMINIUM 610 T

# ALUMINIUM– FILLER METALS– PRODUCT RANGE

Filler Metal Code	AWS A 5.10 Class. DIN 1732 Standard Alloy	Form of delivery	Features Application
<b>610 T / M</b>	ER 4047 ALSI12 3.2585	Rods (T) Spools (M)	<b>For flame and furnace brazing</b> of aluminum alloys, thin flowing ,smooth uniform fillets. (use with flux 40 PA /40 FI or 40 FL/N  For TIG or MIG welding of Al Si Alloys.
<b>612 T/M</b>	ER 4043 ALSI 5 3.2245	Rods (T) Spools (M)	Welding of Al alloys wit Si content of up to 7 %.,suitable for wide range of AL alloys.  Alloy 3004 ; 3005 ; 3303 ; 5005 ; 6060 ; 6061 ; 6071 ; 6063  Can also be used for brazing of aluminum
<b>611 T /M</b>	ER1100 AL 99.5	Rods (T) Spools (M)	Welding of pure aluminum such as AL 99.5,Al 99.7,AL99  Alloy 1080 A ; 1050 A ;1100 ; 3004 ; 3005, 3303
<b>615 T/M</b>	ER 5356 Al Mg 5 3.3565	Rods (T) Spools (M)	Solid wire for welding of AL Mg Alloys  Such as alloy 5056,5083,5086,5454,5754  Used extensively in marine and transport.
<b>40 PA</b> <b>40 PA/NC</b>	PA (corrosive flux res) PA/NC (non corrosive)	Paste 1 kg	Paste type flux for brazing most types of Al ,  Used with rods such as gold 610 T,ER 4047
<b>40 FL</b> <b>40 FL/NC</b>	FL (corrosive flux res) FL/NC (non corrosive)	Powder 0.5 kg/1 kg	Powder flux for brazing most types of Al ,  Used with rods such as 610 T,ER 4047

Legend: T : Rods for GTAW (TIG) Welding are supplied in diam. 1.6,2.0, 2.4 and 3.2 mm / lengths of 1 m

Packing : 5/ 10 kg Cardboard Boxes .

M : Wire for GMAW (MIG ) Welding supplied on spools BS 300 weight 7 kg .Other spools on request

## Disclaimer:

The information and data presented herein are typical or average values. Application suggested are made solely for the purpose of illustration to enable the reader to make his own valuation and are not intended as warranties

www. arcwel.com update August . 2022